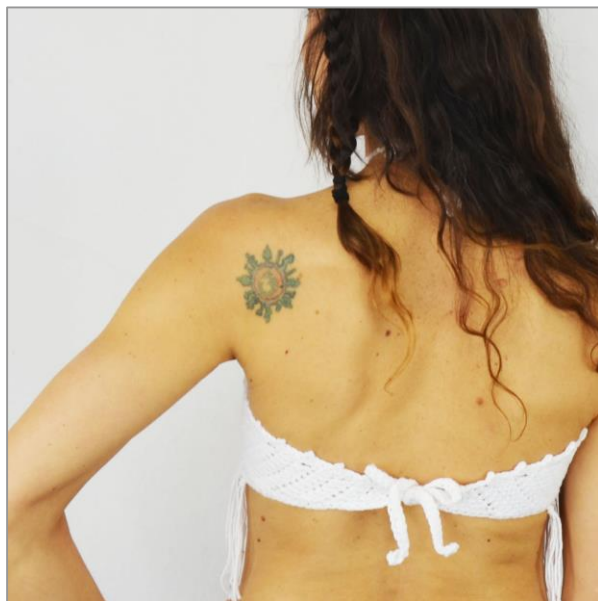


“The Summer Crochet Top”



Difficulty Level



Materials:

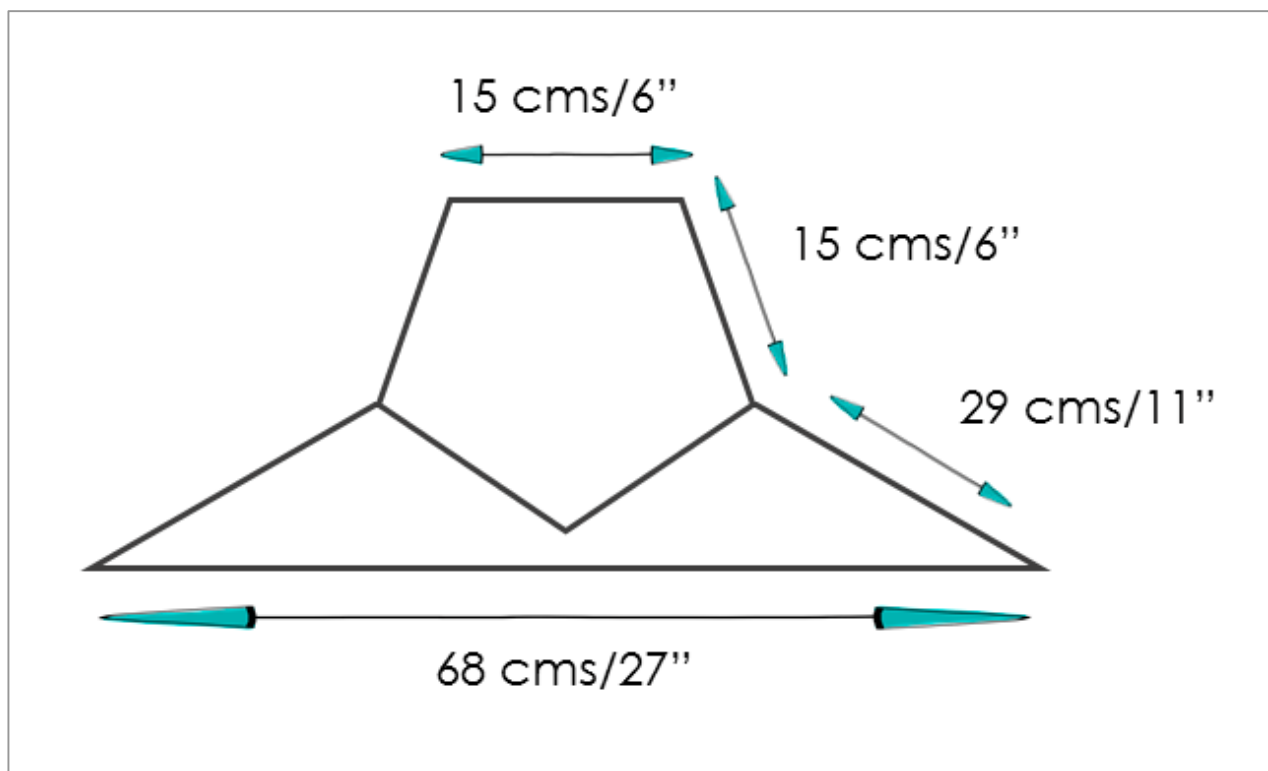
- ▶ Alabama from Katia. In this Pattern I used 2 skeins (50 grs./105 mts./1 oz. ¾ /115 yds.)
- ▶ Size US G6/4 mm crochet hook.
- ▶ Yarn needle

Gauge:

4"/10 cms square with Alabama from Katia Yarns.
 13 DC x 8 rows.



Finished Size



Abbreviations:

MR: Magic Ring, adjustable ring or 4 CH joining the last with the first ST with a SL ST

Row: R

Stitch: ST

Chain: CH

Slip Stitch: SLST

Single Crochet: SC

Double Crochet: DC

Increase: INC

Centimeter(s): cm

Meter(s): m

Previous Row: PR

Right Side: RS

Wrong Side: WS

Left: L

Right: R

The Pattern and photographs of this design are the property of Mamma! DIY. This pattern and design are subject to copyright, and are for personal, non-commercial use only. You may not distribute or sell this pattern or any items created using the directions in this pattern.



The Pattern

Pentagon Granny Section (front of the Top)

Make a MR. Crocheting in the round, with the RS always facing you.

Row 1: in the MR, 3 CH (count as 1 DC) and 2 DC, * 1 CH and 3 DC *, repeat from * to * 3 more times, 1 CH, finish this R with a SLST in the 1st DC.

NOTE 1: If you are going to change color, make a CH, adjust it and cut a thread leaving a tail long enough to hide it later with your yarn needle (it applies to all the following R)

NOTE 2: If you are going to change color, start crocheting within any 1 CH space of the PR. If you are not going to change color, make 1 SLST in each of the next 3 DC of the PR, and a SLST within the next space of 1 CH to start crocheting from there (applies to all of the following R).

Row 2: In the 1st space of 1 CH of the PR make [3 CH (count as 1 DC) and 2 DC, 1 CH, 3 DC], * in the next space of 1 CH of the PR make [3 DC, 1 CH, 3 DC] *, repeat from * to * 3 more times. Finish this R with a SLST in the 1st DC.

Row 3: In the 1st space of 1 CH of the PR make [3 CH (count as 1 DC) and 2 DC, 1 CH, 3 DC], * in the next space of 1 CH make 3 DC, within the next space of 1 CH make [3 DC, 1 CH, 3 DC] *, repeat from * to * 3 more times, in the last space of 1 CH make 3 DC. Finish this R with a SLST in the 1st DC.

Row 4: In the 1st space of 1 CH of the PR make [3 CH (count as 1 DC) and 2 DC, 1 CH, 3 DC], * make 3 DC in each of the next 2 spaces of 1 CH. In the next space of 1 CH make [3 DC, 1 CH, 3 DC] *, repeat from * to * 3 more times, make 3 DC in each of the following 2 spaces of 1 CH. Finish this R with a SLST in the 1st DC.

Row 5: In the 1st space of 1 CH of the PR make [3 CH (count as 1 DC) and 2 DC, 1 CH, 3 DC], * make 3 DC in each of the following 3 spaces of 1 CH, within the next space of 1 CH make [3 DC, 1 CH, 3 DC] *, repeat from * to * 3 more times, make 3 DC in each of the next 3 spaces of 1 CH. Finish this R with a SLST in the 1st DC.



The Pattern

Row 6: Within the 1st space of 1 CH of the PR make [3 CH (count as 1 DC) and 2 DC, 1 CH, 3 DC], * make 3 DC in each of the next 4 spaces of 1 CH. Within the next space of 1 CH make [3 DC, 1 CH, 3 DC] *, repeat from * to * 3 more times, make 3 DC in each of the next 4 spaces of 1 CH. Finish this R with a SLST in the 1st DC.

Note 3: if you want it in a bigger size, you can continue adding 1, 2 or 3 R to the pentagon.

Section Lower side of the chest:

Start crocheting inside any corner of the RS pentagon. It is a space with 1 CH.

Row 1: (RS) 3 CH (count as 1 DC) and 1 DC in the same space of 1 CH, 1 DC in each of the next 18 DC of the PR, when you reach the next corner of the pentagon (central) make [3 DC, 1 CH, 3 DC], 1 DC in each of the following 18 DC of the PR, 2 DC in the next corner of the pentagon. Turn.

Row 2: (WS) 3 CH (count as 1 DC), 1 DC in each of the following 22 ST, when you reach the center corner make [2 DC, 1 CH, 2 DC], 1 DC in each of the next 23 ST. Turn.

Row 3: (RS) 3 CH (count as 1 DC), 1 DC in each of the following 24 ST, when you reach the center corner make [2 DC, 1 CH, 2 DC], 1 DC in each of the next 25 ST. Turn.

Now let's continue with the left chest.

Row 4 L: (WS) 3 CH (count as 1 DC), 1 DC in each of the following 23 ST. Make a INC with 2 DC closed together by inserting the needle into the next ST for the 1st DC, skip 2 ST, and in the next ST make the 2nd DC. Turn.

Row 5 L: (RS) 2 CH (count as 1 DC), 1 DC in the next ST (the 2 CH and the DC count as 1 INC, as 1 only DC). 1 DC in each of the following 22 ST. Turn.



The Pattern

Row 6 L: (WS) 3 CH (count as 1 DC), 1 DC in each of the following 20 ST. In the last 2 ST make 1 INC with 2 DC closed together. Turn.

Row 7 L: (RS) 2 CH (count as 1 DC), 1 DC in the next ST (the 2 CH and the DC count as one INC). 1 DC in each of the following 19 ST. Turn.

Row 8 L: (WS) 3 CH (count as 1 DC), 1 DC in each of the following 17 ST. In the last 2 ST make 1 INC with 2 DC closed together. Turn.

Row 9 L: (RS) 2 CH (count as 1 DC), 1 DC in the next ST (the 2 CH and the DC count as one INC). 1 DC in each of the following 16 ST. Turn.

Row 10 L: (WS) 3 CH (count as 1 DC), 1 DC in each of the following 14 ST. In the last 2 ST make 1 INC with 2 DC closed together. Turn.

Row 11 L: (RS) 2 CH (count as 1 DC), 1 DC in the next ST (the 2 CH and the DC count as one INC, as 1 only DC). 1 DC in each of the following 13 ST. Turn.

Row 12 L: (WS) 3 CH (count as 1 DC), 1 DC in each of the following 11 ST. In the last 2 ST make 1 INC with 2 DC closed together. Turn.

Row 13 L: (RS) 2 CH (count as 1 DC), 1 DC in the next ST (the 2 CH and the DC count as one INC, as 1 only DC). 1 DC in each of the following 10 ST. Turn.

Row 14 L: (WS) 3 CH (count as 1 DC), 1 DC in each of the following 8 ST. In the last 2 ST make 1 INC with 2 DC closed together. Turn.

Row 15 L: (RS) 2 CH (count as 1 DC), 1 DC in the next ST (the 2 CH and the DC count as 1 INC, as 1 only DC). 1 DC in each of the following 7 ST. Turn.

Row 16 L: (WS) 3 CH (count as 1 DC), 1 DC in each of the following 5 ST. In the last 2 ST make 1 INC with 2 DC closed together. Turn.



The Pattern

Row 17 L: (RS) 2 CH (count as 1 DC), 1 DC in the next ST (the 2 CH and the DC count as 1 INC). 1 DC in each of the following 4 ST. Turn.

Row 18 L: (WS) 3 CH (count as 1 DC), 1 DC in each of the following 2 ST. In the last 2 ST make 1 INC with 2 DC closed together. Turn.

Row 19 L: (RS) 2 CH (count as 1 DC), 1 DC in the next ST (the 2 CH and the DC count as 1 INC). 1 DC in the last ST. Turn.

Row 20 L: (WS) 2 CH (count as 1 DC), 1 DC in the next ST (the 2 CH and the DC count as 1 INC). Cut thread.

Now crochet on the right chest, and we do the same as in the left chest, but in reverse. Begin from the center towards the right extreme, placing the RS of the top facing towards you, within the space of 1 CH that makes up the bottom corner of the pentagon.

Row 4 R: (RS) 1 INC with 2 DC closed together, make 2 CH that count as 1st DC, skip 2 ST, and in the next ST make the 2nd DC (both DC closed together count as 1 ST). 1 DC in each of the following 24 ST. Turn.

Row 5 R: (WS) 3 CH (count as 1 DC), 1 DC in each of the following 21 ST. In the last 2 ST make 1 INC of 2 DC closed together. Turn.

Row 6 R: (RS) 1 INC with 2 DC closed together, make 2 CH that count as the 1st DC and in the next ST make the 2nd DC (both DC closed together count as 1 ST). 1 ST in each of the following 21 ST. Turn.

Row 7 R: (WS) 3 CH (count as 1 DC), 1 DC in each of the following 18 ST. In the last 2 ST make 1 INC of 2 DC closed together. Turn.

Row 8 R: (RS) 1 INC with 2 DC closed together, make 2 CH that count as the 1st DC and in the next ST make the 2nd DC (both DC closed together count as 1 ST). 1 DC in each of the following 18 ST. Turn.

Row 9 R: (WS) 3 CH (count as 1 DC), 1 DC in each of the following 15 ST. In the last 2 ST make 1 INC of 2 DC closed together. Turn.



The Pattern

Row 10 R: (RS) 1 INC with 2 DC closed together, make 2 CH that count as the 1st DC and in the next ST make the 2nd DC (both DC closed together count as 1 ST). 1 DC in each of the following 15 ST. Turn.

Row 11 R: (WS) 3 CH (count as 1 DC), 1 DC in each of the following 12 ST. In the last 2 ST make 1 INC of 2 DC closed together. Turn.

Row 12 R: (RS) 1 INC with 2 DC closed together, make 2 CH that count as the 1st DC and in the next ST make the 2nd DC (both DC closed together count as 1 ST). 1 DC in each of the following 12 ST. Turn.

Row 13 R: (WS) 3 CH (count as 1 DC), 1 DC in each of the following 9 ST. In the last 2 ST make 1 INC of 2 DC closed together. Turn.

Row 14 R: (RS) 1 INC with 2 DC closed together, make 2 CH that count as the 1st DC and in the next ST make the 2nd DC (both DC closed together count as 1 ST). 1 DC in each of the following 9 ST. Turn.

Row 15 R: (WS) 3 CH (count as 1 DC), 1 DC in each of the following 6 ST. In the last 2 ST make 1 INC of 2 DC closed together. Turn.

Row 16 R: (RS) 1 INC with 2 DC closed together, make 2 H that count as the 1st DC and in the next ST make the 2nd DC (both DC closed together count as 1 ST). 1 DC in each of the following 6 ST. Turn.

Row 17 R: WS) 3 CH (count as 1 DC), 1 DC in each of the following 3 ST. In the last 2 ST make 1 INC of 2 ST closed together. Turn.

Row 18 R: (RS) 1 INC with 2 DC closed together, make 2 CH that count as the 1st DC and in the next ST make the 2nd DC (both DC closed together count as 1 ST). 1 DC in each of the following 3 ST. Turn.

Row 19 R: (WS) 3 CH (count as 1 DC). In the last 2 ST make 1 INC of 2 DC closed together. Turn.

Row 20 R: (RS) 1 INC with 2 DC closed together, make 2 CH that count as the 1st DC and in the next ST make the 2nd DC (both DC closed together count as 1 ST).

DO NOT CUT YARN.



The Pattern

Edge section and strips

Now we are going to crochet the entire edge of this Top and we will add the strips in the following way:

- ▶ Start with 1CH and work in SC along the entire bottom edge of the top until you reach the other extreme.
- ▶ Once there, make all the CH that are necessary for the 1st strip of the back.
- ▶ Starting in the 2nd CH counting from hook, make 1 SC in each of the following CH until you reach the end where the strip is born.
- ▶ Crochet all the left edge of the top in SC until you reach the 1st extreme of the neck.
- ▶ Repeat the instructions for the 1st neck strap.
- ▶ Crochet the entire upper edge of the neck in SC until you reach the 2nd end of the neck.
- ▶ Repeat the instructions for the 2nd neck strap.
- ▶ Crochet the entire right edge of the top until you reach the bottom right edge.
- ▶ Repeat the instructions for the 2nd strip of the back and when you finish it closes with a SLST in the 1st SC of the lower edge of the top.

Finishing your Top!

To finish your top, hide all the remaining strands with your yarn needle between the fabric and cut with the scissors all the leftovers.

You can add fringes of the length that you like the most!



The Crochet Scheme

The Summer Crochet Top Scheme Esquema de The Summer Crochet Top

- ⊙ Círculo Mágico / Magic Ring
- Cadeneta / Chain
- ‡ Punto Alto / Double Crochet
- ⌘ AUM (2 PA cerrados juntos)
INC (2 DC close together)

www.mammadiy.es / @mammadiypatterns

The Pattern and photographs of this design are the property of Mamma! DIY. This pattern and design are subject to copyright, and are for personal, non-commercial use only. You may not distribute or sell this pattern or any items created using the directions in this pattern.



Your Summer Crochet Top!



Thanks for your collaboration to Mamma! Do It Yourself.
I hope I can continue with this Project and keep making a Creative World!
Have a beautiful life!

If you want to find more Crochet Patterns like this, you can visit my Etsy Shop and you can follow me on Instagram as [@mammadiypatterns](#).

I would love if you share your pics on IG, please tag me!
You can use [#mammadiy](#) or [#mammadiypatterns](#) hashtags also!

You can find me in [Ravelry](#) as [mammadiy](#)
or in [YouTube](#) as [Mamma Do It Yourself!](#)

See you soon! Muack!

